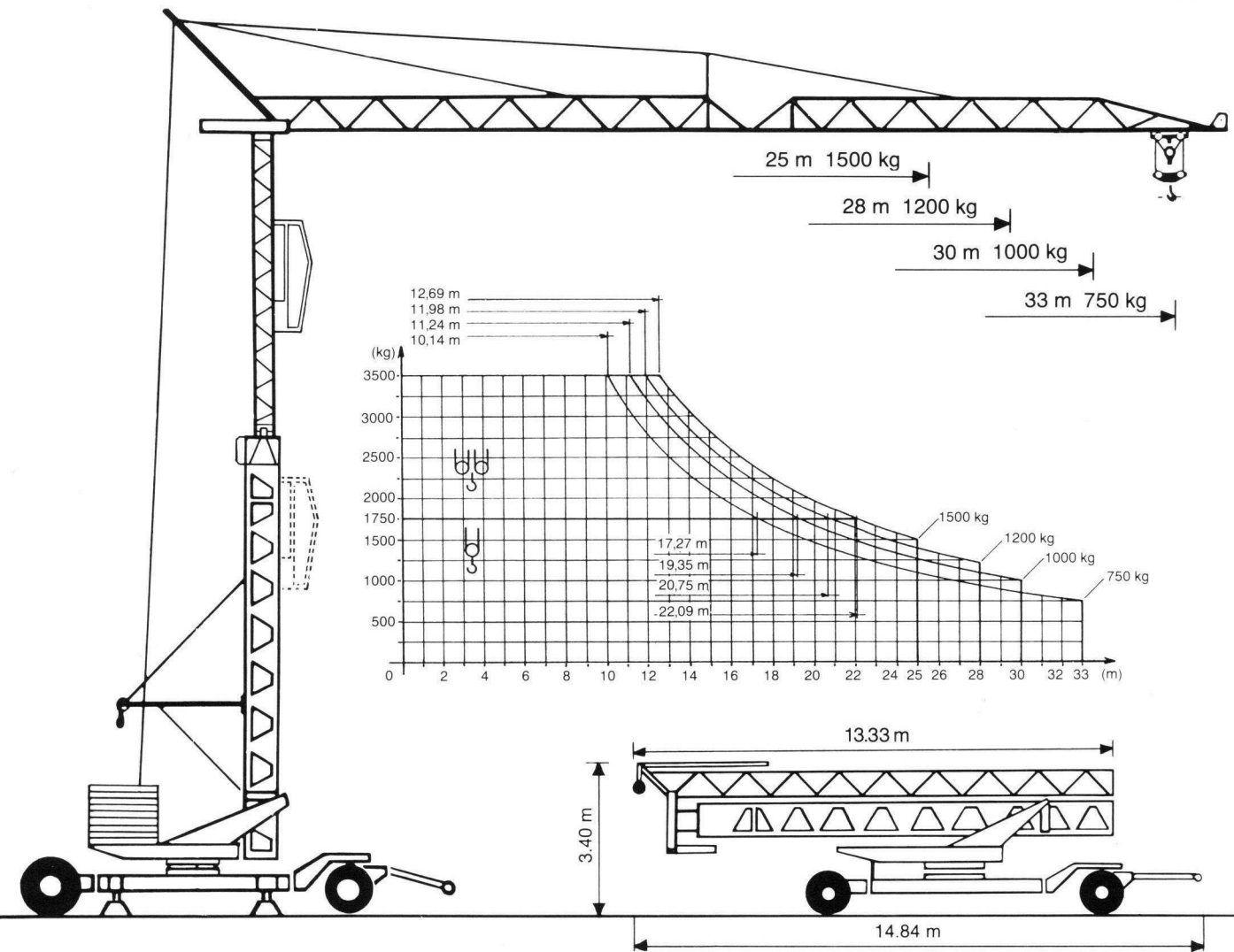


Conducta EURO-Kran E 3010/33

Zul.-Nr.
SUVA 1409
ZUTK/TÜV 5904



| Tragkraft Ausladung | kg | 3500 | 1750 | 1500 | 1200 | 1000 | 750 | Hakenhöhe hauteur s/crochet altezza gancio height of hook |
|------------------------|----|-------|--|-------------------------------|--|---------------|-------|--|
| 25 m | m | 12.69 | 22.09 | 25.00 | | | | 18/23 m |
| 28 m | m | 11.98 | 20.75 | | 28.00 | | | Abstützung ecartement de voie scartamento wheel gauge (track) |
| 30 m | m | 11.24 | 19.35 | | | 30.00 | | 4.0 x 4.0 m |
| 33 m | m | 10.14 | 17.27 | | | | 33.00 | |
| | | | 40 m/min v = 20 m/min 3 m/min | 1500 kg 1750 kg 1750 kg | Drehradius rayon de giration arrière raggio rotazione rotating radius | 2.52–3.05 m | | |
| | | | 20 m/min v = 10 m/min 1.5 m/min | 3000 kg 3500 kg 3500 kg | Konstruktionsgewicht poids de la grue peso della gru structural weight | 12.4 t | | |
| | | | v = 20/40 m/min | | Eckdruck/Raddruck pression d'angle/charge par roue pressione su uno stabilizzatore corner pressure/wheel pressure | 22.70–21.00 t | | |
| | | | n = 0.2/0.6/0.9 U/min stufenlose, progressive Steuerung | | Gesamt-Motorenleistung puissance totale des moteurs forza motrice totale total motor output | 18 kW | | |
| | | | v = 25 m/min | | Kabelquerschnitt section du cable sezione del cavo sottogomma cable section | 4 x 10 □ | | |