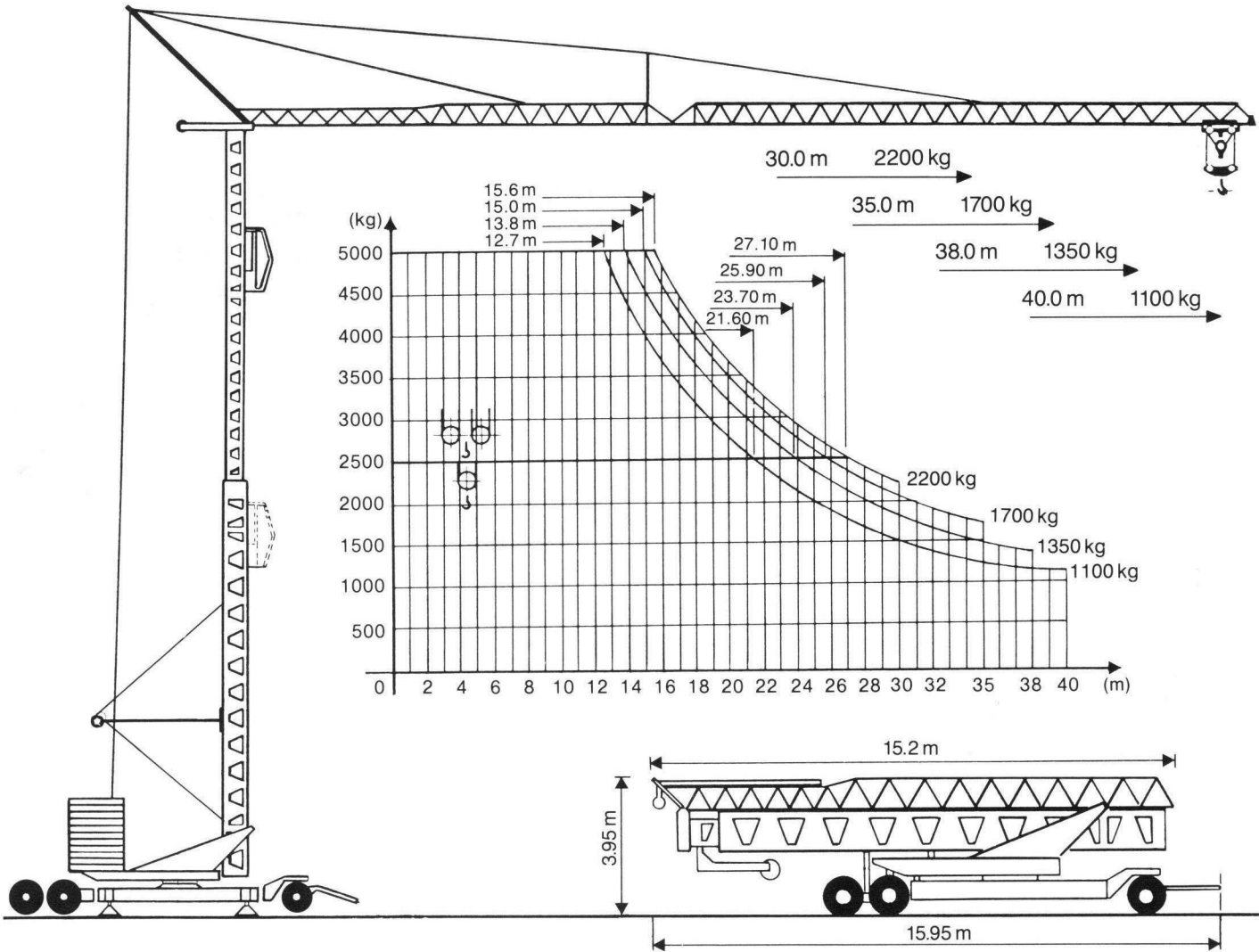


Conducta EURO-Kran E 4011/25

Zul.-Nr.
SUVA 1863
ZUTK/TÜV 5910



Tragkraft Ausladung	kg	5000	2500	2200	1700	1350	1100	Hakenhöhe hauteur s/crochet altezza gancio height of hook	20/24.5 m
30 m	m	15.6	27.1	30.0				Abstützung ecartement de voie scartamento wheel gauge (track)	4.5 x 4.5 m
35 m	m	15.0	25.9		35.0				
38 m	m	13.8	23.7			38.0			
40 m	m	12.7	21.6				40.0		
	v =	50 m/min		2000 kg		2500 kg		Drehradius rayon de giration arrière raggio rotazione rotating radius	3.56–3.90 m
		25 m/min		2500 kg		2500 kg			
	v =	25 m/min		4000 kg		5000 kg		Konstruktionsgewicht poids de la grue peso della gru structural weight	21.5 t
		12.5 m/min		5000 kg		5000 kg		Gegenballast contre poids zavorra contrappeso counterweight	34.0–28.0 t
	v =	25/50 m/min		Eckdruck/Raddruck pression d'angle/charge par roue pressione su uno stabilizzatore corner pressure/wheel pressure		30.4 t–30.0 t			
	n =	0.2/0.6/1.0 U/min		Gesamt-Motorenleistung puissance totale des moteurs forza motrice totale total motor output		26 kW			
	v =	20 m/min		Kabelquerschnitt section du cable sezione del cavo sottogomma cable section		4 x 16 □			